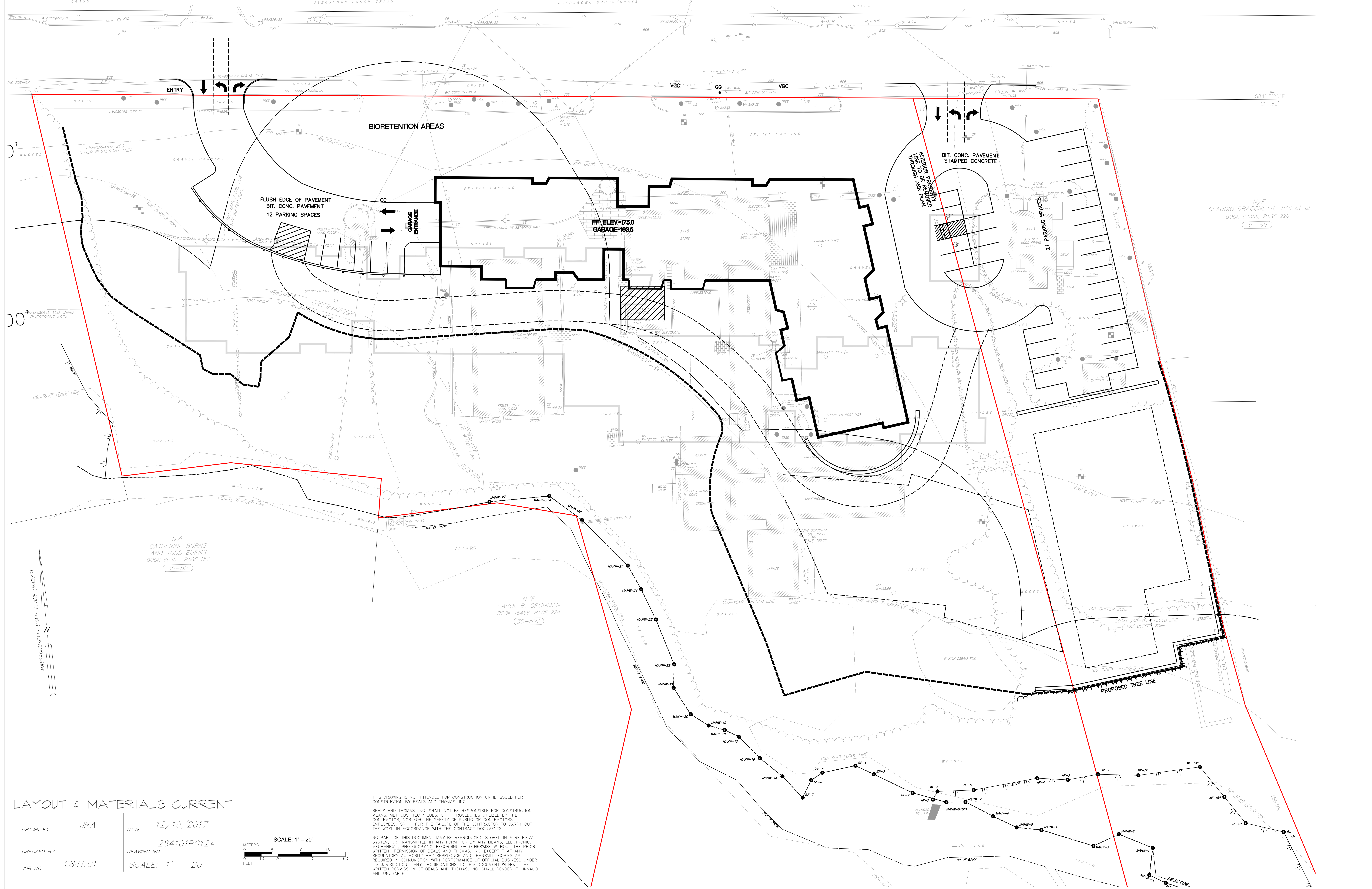


**BOSTON POST ROAD (ROUTE 20)**  
**(PUBLIC-50' WIDE)**  
**(1897 L.O. 248-2 + 248-3)**



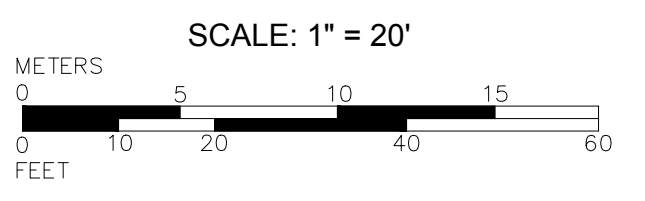
N/F  
 CLAUDIO DRAGONETTI, TRS et al  
 BOOK 64366, PAGE 220  
 30-69

N/F  
 CATHERINE BURNS  
 AND TODD BURNS  
 BOOK 66953, PAGE 157  
 30-52

N/F  
 CAROL B. GRUMMAN  
 BOOK 16456, PAGE 224  
 30-52A

**LAYOUT & MATERIALS CURRENT**

DRAWN BY:	JRA	DATE:	12/19/2017
CHECKED BY:	284101P012A	DRAWING NO.:	
JOB NO.:	2841.01	SCALE:	1" = 20'



THIS DRAWING IS NOT INTENDED FOR CONSTRUCTION UNTIL ISSUED FOR CONSTRUCTION BY BEALS AND THOMAS, INC.  
 BEALS AND THOMAS, INC. SHALL NOT BE RESPONSIBLE FOR CONSTRUCTION MEANS, METHODS, TECHNIQUES, OR PROCEDURES UTILIZED BY THE CONTRACTOR, NOR FOR THE SAFETY OF PUBLIC OR CONTRACTORS' EMPLOYEES, OR FOR THE FAILURE OF THE CONTRACTOR TO CARRY OUT THE WORK IN ACCORDANCE WITH THE CONTRACT DOCUMENTS.

NO PART OF THIS DOCUMENT MAY BE REPRODUCED, STORED IN A RETRIEVAL SYSTEM, OR TRANSMITTED IN ANY FORM OR BY ANY MEANS, ELECTRONIC, MECHANICAL, PHOTOCOPYING, RECORDING OR OTHERWISE WITHOUT THE PRIOR WRITTEN PERMISSION OF BEALS AND THOMAS, INC. EXCEPT THAT ANY REGULATORY AUTHORITY MAY REPRODUCE AND TRANSMIT COPIES AS REQUIRED IN CONJUNCTION WITH PERFORMANCE OF OFFICIAL BUSINESS UNDER ITS JURISDICTION. ANY MODIFICATIONS TO THIS DOCUMENT WITHOUT THE WRITTEN PERMISSION OF BEALS AND THOMAS, INC. SHALL RENDER IT INVALID AND UNUSABLE.